

[2016-NEW! Professional 612q 70-417 Braindump For Free Download Now (Question 151 – Question 180)

What are the new 70-417 exam questions? Where to download the latest 70-417 exam dumps? Recently, PassLeader have been published the new version of 70-417 braindumps with new added 70-417 exam questions. PassLeader offer the latest 70-417 PDF and VCE dumps with New Version VCE simulator for free download, and PassLeader's new 612q 70-417 practice tests ensure your exam 100 percent passing. Visit www.passleader.com to get the 100 percent pass ensure 612q 70-417 exam questions! keywords: 70-417 exam,612q 70-417 exam dumps,612q 70-417 exam questions,70-417 pdf dumps,70-417 vce dumps,70-417 study guide,70-417 practice test,Upgrading Your Skills to MCSA Windows Server 2012 R2 Exam P.S. Download Free 70-417 PDF Dumps and Preview PassLeader 70-417 VCE Dumps At The End Of This Post!!! (Ctrl+End) QUESTION 151Drag and Drop QuestionYou have a server named Server1 that runs Windows Server 2012 R2. You are asked to test Windows Azure Online Backup to back up Server1. You need to back up Server1 by using Windows Azure Online Backup. Which four actions should you perform in sequence? To answer, move the appropriate four actions from the list of actions to the answer area and arrange them in the correct order.

Actions	Answer Area
Sign up for a Microsoft Online Services account.	
Install the Windows Server Backup feature.	
Run the Windows Azure Online Backup Agent Setup Wizard.	
Download the Windows Azure Online Backup Agent.	
Run the Register Server Wizard.	

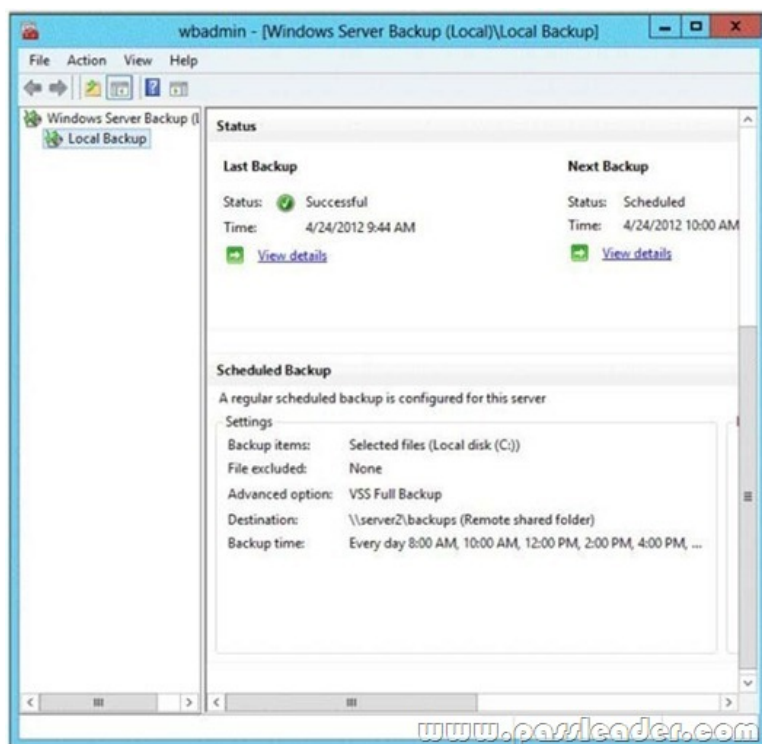
www.passleader.com

Answer:

Actions	Answer Area
Sign up for a Microsoft Online Services account.	Sign up for a Microsoft Online Services account.
Install the Windows Server Backup feature.	
Run the Windows Azure Online Backup Agent Setup Wizard.	Download the Windows Azure Online Backup Agent.
Download the Windows Azure Online Backup Agent.	Run the Windows Azure Online Backup Agent Setup Wizard.
Run the Register Server Wizard.	Run the Register Server Wizard.

www.passleader.com

QUESTION 152Your network contains two servers named Server1 and Server2 that run Windows Server 2012 R2. Server1 and Server2 have the Hyper-V server role installed. Server1 and Server2 are configured as Hyper-V replicas of each other. Server2 hosts a virtual machine named VM5. VM5 is replicated to Server1. You need to verify whether the replica of VM5 on Server1 is functional. The solution must ensure that VM5 remains accessible to clients. What should you do from Hyper-V Manager? A. On Server1, execute a Planned Failover.B. On Server1, execute a Test Failover.C. On Server2, execute a Planned Failover.D. On Server2, execute a Test Failover. Answer: B QUESTION 153You have a server named Server1 that runs Windows Server 2012 R2. Server1 is backed up by using Windows Server Backup. The backup configuration is shown in the exhibit. (Click the Exhibit button.)



You discover that only the last copy of the backup is maintained. You need to ensure that multiple backup copies are maintained. What should you do? A. Modify the backup destination.B. Configure the Optimize Backup Performance settings.C. Modify the Volume Shadow Copy Service (VSS) settings.D. Modify the backup times. Answer: A QUESTION 154Your network contains two Web servers named Server1 and Server2. Both servers run Windows Server 2012 R2. Server1 and Server2 are nodes in a Network Load Balancing (NLB) cluster. The NLB cluster contains an application named App1 that is accessed by using the URL <http://app1.contoso.com>. You plan to perform maintenance on Server1. You need to ensure that all new connections to App1 are directed to Server2. The solution must not disconnect the existing connections to Server1. What should you run? A. The Set-NlbCluster cmdletB. The nlb.exe suspend commandC. The nlb.exe stop commandD. The Suspend-NlbClusterNode cmdlet Answer: D QUESTION 155Your network contains an Active Directory domain named contoso.com. The domain contains a server named Server1 that runs Windows Server 2012 R2. On a server named Server2, you perform a Server Core Installation of Windows Server 2012 R2. You join Server2 to the contoso.com domain. You need to ensure that you can manage Server2 by using the Computer Management console on Server1. What should you do on Server2? A. Run sconfig.exe and configure remote management. (Run the Enable-NetFirewallRulecmdlet.)B. Run sconfig.exe and configure Remote Server Administration Tools (RSAT).C. Install Windows Management Framework.D. Install Remote Server Administration Tools (RSAT). Answer: A QUESTION 156You have a server named Server1 that runs Windows Server 2012 R2. Server1 has 2 dual-core processors and 16 GB of RAM. You install the Hyper-V server role in Server1. You plan to create two virtual machines on Server1. You need to ensure that both virtual machines can use up to 8 GB of memory. The solution must ensure that both virtual machines can be started simultaneously. What should you configure on each virtual machine? A. Dynamic MemoryB. NUMA topologyC. Memory weightD. Resource Control Answer: A QUESTION 157You perform a Server Core Installation of Windows Server 2012 R2 on a server named Server1. You need to add a graphical user interface (GUI) to Server1. Which tool should you use? A. the dism.exe commandB. the ocsetup.exe commandC. the setup.exe commandD. the Install-Module cmdlet Answer: A QUESTION 158 Drag and Drop QuestionYour network contains a single Active Directory domain named contoso.com. The domain contains an Active Directory site named Site1 and an organizational unit (OU) named OU1. The domain contains a client computer named Client1 that is located in OU1 and Site1. You create five Group Policy objects (GPO). The GPOs are configured as shown in the following table.

GPO name	Linked to	Enforced setting
GPO1	Contoso.com	Disabled
GPO2	Contoso.com	Enabled
GPO3	Site1	Disabled
GPO4	OU1	Disabled
GPO5	OU1	Enabled

You need to identify in which order the GPOs will be Applied to Client1. In which order should you arrange the listed GPOs? To answer, move all GPOs from the list of GPOs to the answer area and arrange them in the correct order.

GPOs	Answer Area
GPO5	
GPO3	
GPO4	
GPO1	
GPO2	

www.passleader.com

Answer:

GPOs	Answer Area
	GPO3
	GPO1
	GPO4
	GPO5
	GPO2

www.passleader.com

QUESTION 159Hotspot QuestionYou have a server named DHCP1 that runs Windows Server 2012 R2. DHCP1 does not have access to the Internet. All roles are removed completely from DHCP. You mount a Windows Server 2012 R2 installation image to the C:\Mount folder. You need to install the DHCP Server server role on DHCP1 by using Server Manager. Which folder should you specify as the alternate path for the source files? To answer, select the appropriate folder in the answer area.

www.passleader.com

Answer:



QUESTION 160 Your network contains an Active Directory domain named contoso.com. The domain contains client computers that run either Windows XP, Windows 7, or Windows 8. Network Policy Server (NPS) is deployed to the domain. You plan to create a system health validator (SHV). You need to identify which policy settings can be Applied to all of the computers. Which three policy settings should you identify? (Each correct answer presents part of the solution. Choose three.) A. A firewall is enabled for all network connections. B. An antispyware application is on. C. Automatic updating is enabled. D. Antivirus is up to date. E. Antispyware is up to date. Answer: ACD

QUESTION 161 Your network contains a Hyper-V host named Server1 that hosts 20 virtual machines. You need to view the amount of memory resources and processor resources each virtual machine uses currently. Which tool should you use on Server1? A. Hyper-V Manager B. Windows System Resource Manager (WSRM) C. Task Manager D. Resource Monitor Answer: A

QUESTION 162 You have a server named Server1 that runs Windows Server 2012 R2. You create a Data Collector Set (DCS) named DCS1. You need to configure DCS1 to log data to D:\logs. What should you do? A. Right-click DCS1 and click Data Manager. B. Right-click DCS1 and click Save Template. C. Right-click DCS1 and click Properties. D. Right-click DCS1 and click Export list. Answer: C

QUESTION 163 Your network contains an Active Directory domain named contoso.com. The domain contains a member server named Server1. Server1 runs Windows Server 2012 R2 and has the Hyper-V server role installed. Server1 hosts 10 virtual machines. A virtual machine named VM1 runs Windows Server 2012 R2 and hosts a processor-intensive Application named App1. Users report that App1 responds more slowly than expected. You need to monitor the processor usage on VM1 to identify whether changes must be made to the hardware settings of VM1. Which performance object should you monitor on Server1? A. Hyper-V Hypervisor Logical Processor B. Processor C. Hyper-V Hypervisor Root Virtual Processor D. Process E. Hyper-V Hypervisor Virtual Processor Answer: E

QUESTION 164 Your network contains an Active Directory domain named contoso.com. All domain controllers run Windows Server 2012 R2. In a remote site, a support technician installs a server named DC10 that runs Windows Server 2012 R2. DC10 is currently a member of a workgroup. You plan to promote DC10 to a read-only domain controller (RODC). You need to ensure that a user named ContosoUser1 can promote DC10 to a RODC in the contoso.com domain. The solution must minimize the number of permissions assigned to User1. What should you do? A. From Active Directory Administrative Center, modify the security settings of the

Domain Controllers organizational unit (OU).B. From Active Directory Users and Computers, pre-create an RODC computer account.C. From Dismgmt, run the local roles command.D. Join DC10 to the domain. Modify the properties of the DC10 computer account. Answer: B QUESTION 165Drag and Drop QuestionYou have a file server named Server1 that runs Windows Server 2012 R2. The folders on Server1 are configured as shown in the following table.

Folder name	NTFS encryption	NTFS comp
Folder1	No	No
Folder2	Yes	No
Folder3	No	Yes

A new corporate policy states that backups must use Windows Azure Online Backup whenever possible. You need to identify which technology you must use to back up Server1. The solution must use Windows Azure Online Backup whenever possible. What should you identify? To answer, drag the appropriate backup type to the correct location or locations. Each backup type may be used once, more than once, or not at all. You may need to drag the split bar between panes or scroll to view content.

Backup Type

Windows Azure Online Backup

Windows Server Backup

Answer:

Backup Type

Windows Azure Online Backup

Windows Server Backup

Answer Area

Folder1

Windows Azure Online Backup

Folder2

Windows Azure Online Backup

Folder3

Windows Azure Online Backup

System State

Windows Server Backup

QUESTION 166Drag and Drop QuestionYour network contains an Active Directory forest named contoso.com. Recently, all of the domain controllers that ran Windows Server 2003 were replaced by domain controllers that run Windows Server 2012 R2. From Event Viewer, you discover SYSVOL journal wrap errors on a domain controller named dc10.contoso.com. You need to perform a non-authoritative synchronization of SYSVOL on DC10. Which three actions should you perform on DC10? To answer, move the three appropriate actions from the list of actions to the answer area and arrange them in the correct order.

Stop the File Replication Service (FRS) service.

Stop the Distributed File System (DFS) Replication service.

Modify the registry.

Start the Distributed File System (DFS) Replication service.

Start the File Replication Service (FRS) service.

Modify the computer object for DC10 in Active Directory.

Answer:

Stop the File Replication Service (FRS) service.

Start the File Replication Service (FRS) service.

Start the Distributed File System (DFS) Replication service.

Stop the Distributed File System (DFS) Replication service.

Modify the registry.

Modify the computer object for DC10 in Active Directory.

Answer Area

Stop the File Replication Service (FRS) service.

Modify the registry.

Start the File Replication Service (FRS) service.

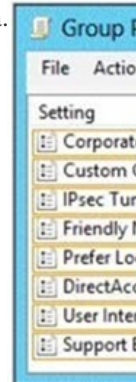
QUESTION 167Your network contains an Active Directory forest named contoso.com. The forest contains a single domain. All domain controllers run Windows Server 2012 R2. The domain contains two domain controllers. The domain controllers are configured as shown in the following table.

Domain controller name	Server type	Scheduled task
DC1	Physical server	Daily snapshots of Active Directory
DC2	Hyper-V virtual machine	Daily snapshots of the virtual machine Daily backups of the system state

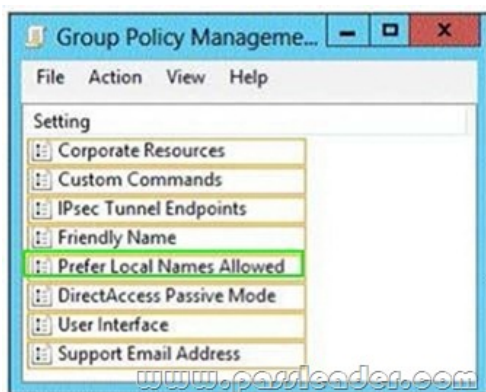
Active Directory Recycle Bin is enabled. You discover that a support technician accidentally removed 100 users from an Active Directory group named Group1 an hour ago. You need to restore the membership of Group1. What should you do? A. Export and import data by using Dsmain.B. Apply a virtual machine snapshot to VM1.C. Recover the items by using Active Directory Recycle Bin.D. Modify the isRecycled attribute of Group1. Answer: A

QUESTION 168Your network contains an Active Directory domain named contoso.com. The domain contains a domain controller named DC1 that runs Windows Server 2012 R2. DC1 is backed up daily. The domain has the Active Directory Recycle Bin enabled. During routine maintenance, you delete 500 inactive user accounts and 100 inactive groups. One of the deleted groups is named Group1. Some of the deleted user accounts are members of some of the deleted groups. For documentation purposes, you must provide a list of the members of Group1 before the group was deleted. You need to identify the names of the users who were members of Group1 prior to its deletion. You want to achieve this goal by using the minimum amount of administrative effort. What should you do first? A. Mount the most recent Active Directory backup.B. Perform an authoritative restore of Group1.C. Use the Recycle Bin to restore Group1.D. Reactivate the tombstone of Group1. Answer: A

QUESTION 169Hotspot QuestionYour network contains an Active Directory domain named adatum.com. The domain contains a server named Server1. Your company implements DirectAccess. A user named User1 works at a customer's office. The customer's office contains a server named Server1. When User1 attempts to connect to Server1, User1 connects to Server1 in adatum.com. You need to provide User1 with the ability to connect to Server1 in the customer's office. Which Group Policy option should you configure? To answer, select the appropriate option in the answer area.



Answer:



QUESTION 170In an isolated test environment, you deploy a server named Server1 that runs a Server Core Installation of Windows Server 2012 R2. The test environment does not have Active Directory Domain Services (AD DS) installed. You install the

Active Directory Domain Services server role on Server1. You need to configure Server1 as a domain controller. Which cmdlet should you run? A. Install-ADDSForest B. Install-ADDSDomain C. Install-WindowsFeature D. Install-ADDSDomainController
Answer: A
QUESTION 171 Your network contains an Active Directory domain named contoso.com. All servers run Windows Server 2012 R2. The domain contains a server named Server1. You open Review Options in the Active Directory Domain Services Configuration Wizard, and then you click View script. You need to ensure that you can use the script to promote Server1 to a domain controller. Which file extension should you use to save the script? A. .xml B. .ps1 C. .bat D. .cmd
Answer: B
QUESTION 172 You have a server named Server1 that has a Server Core installation of Windows Server 2008 R2. Server1 has the DHCP Server server role and the File Server server role installed. You need to upgrade Server1 to Windows Server 2012 R2 with the graphical user interface (GUI). The solution must meet the following requirements:- Preserve the server roles and their configurations.- Minimize administrative effort. What should you do? A. On Server1, run setup.exe from the Windows Server 8 installation media and select Server with a GUI. B. Start Server1 from the Windows Server 8 installation media and select Server Core Installation. When the installation is complete, add the Server Graphical Shell feature. C. Start Server1 from the Windows Server 8 installation media and select Server with a GUI. D. On Server1, run setup.exe from the Windows Server 8 installation media and select Server Core Installation. When the installation is complete, add the Server Graphical Shell feature.
Answer: D
QUESTION 173 Hotspot Question You have a server named Server1 that runs Windows Server 2012 R2. Server1 does not have Internet connectivity. All roles are removed completely from Server1. You mount a Windows Server 2012 R2 installation image to the C:\Source folder. You need to install the DNS Server server role on Server1. Which folder should you use as the source? To answer, select the appropriate folder in the answer area.



Answer:



QUESTION 174 You have a server named Server1 that runs Windows Server 2012 R2. You connect two new hard disks to Server1. You need to create a storage space that contains the two disks. The solution must meet the following requirements:- Provide fault tolerance if a single disk fails.- Maximize the amount of files that can be stored in the storage space. What should you create? A.

A spanned volume B. A parity space C. A mirrored space D. A simple space Answer: C QUESTION 175 Your network contains an Active Directory domain named contoso.com. The domain contains two member servers named Server1 and Server2 that run Windows Server 2012 R2. You log on to Server1. You need to retrieve a list of the active TCP connections on Server2.

Which command should you run from Server1? A. winrs -r:server2 netstat B. dsquery * -scope base -attrip,server2 C. winrm get server2 D. netstat > server2 Answer: A QUESTION 176 Hotspot Question Your network contains an Active Directory domain named contoso.com. The domain contains two servers named Server1 and Server2 that run Windows Server 2012 R2. From Server2, you attempt to connect to Server1 by using Computer Management and you receive the following error message: "Computer \Server1 cannot be found. The network path was not found." From Server1, you successfully connect to Server2 by using Server Manager.

You need to ensure that you can manage Server1 remotely from Server2 by using Computer Management. What should you configure? To answer, select the appropriate option in the answer area.



Answer:



QUESTION 177 Your network contains an Active Directory domain named adatum.com. The domain contains the servers shown in the following table.

Server name	Operating system	Configuration
DC1	Windows Server 2012	Domain controller
DC2	Windows Server 2008 R2 Service Pack 1 (SP1)	Domain controller
Server1	Windows Server 2008 R2 Service Pack 1 (SP1)	File server
Server2	Windows Server 2012	File server

You need to ensure that you can use Server Manager on DC1 to manage DC2. Which two tasks should you perform? (Each correct answer presents part of the solution. Choose two.) A. Install the Windows PowerShell 2.0 engine on DC1.B. Install Microsoft .NET Framework 4 on DC2.C. Install Remote Server Administration Tools on DC1.D. Install Remote Server Administration Tools on DC2.E. Install Windows Management Framework 3.0 on DC2. Answer: BE QUESTION 178Your network contains an

Tools on DC2.E. Install Windows Management Framework 3.0 on DC2. Answer: BE QUESTION 178Your network contains an Active Directory domain named adatum.com. The domain contains a server named Server1 that runs Windows Server 2012 R2. On a server named Core1, you perform a Server Core Installation of Windows Server 2012 R2. You join Core1 to the adatum.com domain. You need to ensure that you can use Event Viewer on Server1 to view the event logs on Core1. What should you do on Core1? A. Install Remote Server Administration Tools (RSAT).B. Run the Enable-NetFirewallRulecmdlet.C. Run the Disable-NetFirewallRulecmdlet.D. Install Windows Management Framework. Answer: B QUESTION 179Your network contains a server named Server1 that runs Windows Server 2012 R2. Server1 has the Hyper-V server role installed. Server1 hosts four virtual machines named VM1, VM2, VM3, and VM4. Server1 is configured as shown in the following table. Hardware component

Hardware component	Configuration
Processor	Eight quad-core CPUs that have non-uniform memory access (NUMA)
Memory	32 GB of RAM
Disk	Two local 4-TB disks
Network	Eight network adapters VMQ-supported PCI-SIG-supported

You install Windows Server 2012 R2 on VM2 by using Windows Deployment Services (WDS). You need to ensure that the next time VM2 restarts, you can connect to the WDS server by using PXE. Which virtual machine setting should you configure for VM2? A. NUMA topology B. Resource control C. Resource metering D. Virtual Machine Chimney E. The VLAN ID F. Processor Compatibility G. The startup order H. Automatic Start Action I. Integration Services J. Port mirroring K. Single-root I/O virtualization Answer: G QUESTION 180 Drag and Drop Question Your network contains an Active Directory domain named contoso.com. The domain contains two servers named Server1 and Server3. The network contains a standalone server named Server2. All servers run Windows Server 2012 R2. The servers are configured as shown in the following table.

Server name
Server1
Server2
Server3

Server3 hosts an application named App1. App1 is accessible internally by using the URL <https://app1.contoso.com>. App1 only

supports Integrated Windows authentication. You need to ensure that all users from the Internet are pre-authenticated before they can access App1. What should you do? To answer, drag the appropriate servers to the correct actions. Each server may be used once, more than once, or not at all. You may need to drag the split bar between panes or scroll to view content.

Answer Area

Server1

Server2

Server3

Create a relying party trust:

Enable constrained delegation:

Run the Publish New Application Wizard:

Install a certificate for app1.contoso.com:

Answer:

www.passleader.com

Answer Area

Server1

Server2

Server3

Create a relying party trust:

Enable constrained delegation:

Run the Publish New Application Wizard:

Install a certificate for app1.contoso.com:

Download Free 70-417 PDF Dumps From Google Drive:
https://drive.google.com/open?id=0B-ob6L_OjGLpfjJyZU1pUIVQdlpWV0dXUlljZVVhWmJUa0pZbVVBdzZYSllIN3ktT1VMUIk
(Explanation For Every Question Is Available!) PassLeader 70-417 VCE Dumps Screenshots:

PassLeader Premium 70-417 VCE

Mark

Question 10 of 454 (Exam A, Q236)

Your network contains an Active Directory domain named contoso.com. The domain contains six domain controllers as shown in the following table.

Domain controller name	Operating system	FSMO role
DC1	Windows Server 2008 R2	PDC emulator
DC2	Windows Server 2012 R2	Schema master
DC3	Windows Server 2008 R2	Infrastructure master
DC4	Windows Server 2008 R2	Domain naming master
DC5	Windows Server 2008 R2	RID master
DC6	Windows Server 2012 R2	None

The network contains a server named Server1 that has the Hyper-V server role installed. Server1 hosts a virtual machine named VM1.

You need to ensure that you can clone DC6.

Which FSMO role should you transfer to DC2?

☐ A. Rid master

☐ B. Domain naming master

☐ C. PDC emulator

☐ D. Infrastructure master

Previous

Next

Review

PassLeader Premium 70-417 VCE Dumps Preview

Mark

Question 11 of 454 (Exam A, Q129)

Instructions

HOTSPOT

Your network contains an Active Directory domain named contoso.com.

You need to identify whether the Company attribute replicates to the global catalog.

Which part of the Active Directory partition should you view?

To answer, select the appropriate Active Directory object in the answer area.

ADSI Edit

File Action View Help

ADSI Edit

RootDSE [CONT-DC1.contoso.com]

Schema [CONT-DC1.contoso.com]

ForestDNSZones [CONT-DC1.contoso.com]

DomainDNSZones [CONT-DC1.contoso.com]

Configuration [CONT-DC1.contoso.com]

Default naming context [CONT-DC1.contoso.com]

Previous

Next

Review

Show Answer

Show List

Save Session

End Exam

Download New 70-417 VCE Dumps From PassLeader: <http://www.passleader.com/70-417.html> (New Questions Are 100% Available and Wrong Answers Have Been Corrected!!!)