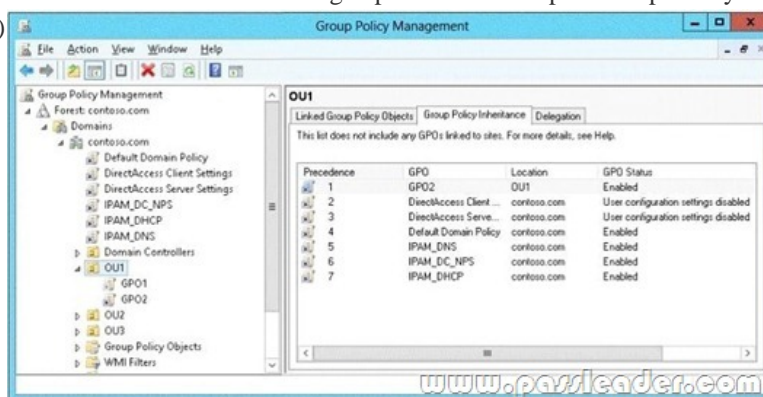


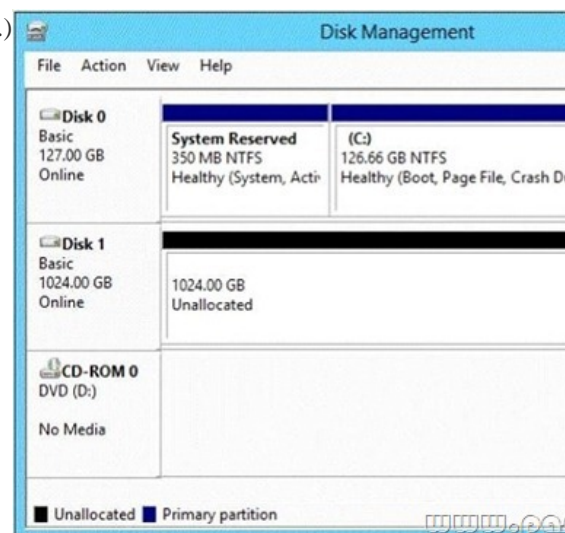
## [2016-NEW! PassLeader Premium 70-417 Exam Questions For Free Reading (Question 241 &ndash; Question 270)

Passed 70-417 exam with the best PassLeader 70-417 exam dumps now! PassLeader are supplying the newest 612q 70-417 VCE dumps and PDF dumps, which cover all the new 70-417 questions and answers, it is 100 percent pass ensure for 70-417 exam. PassLeader offer PDF and VCE format 70-417 exam dumps, and free version VCE simulator is also available. Visit [passleader.com](http://passleader.com) now and download the 100 percent passing guarantee 612q 70-417 braindumps to achieve your 70-417 certification exam easily! keywords: 70-417 exam,612q 70-417 exam dumps,612q 70-417 exam questions,70-417 pdf dumps,70-417 vce dumps,70-417 study guide,70-417 practice test,Upgrading Your Skills to MCSA Windows Server 2012 R2 Exam P.S. Download Free 70-417 PDF Dumps and Preview PassLeader 70-417 VCE Dumps At The End Of This Post!!! (Ctrl+End) QUESTION 241Your network contains an Active Directory domain named contoso.com. The domain contains a server named Server1. Server1 runs Windows Server 2012 R2 and has the Hyper-V server role installed. You have a virtual machine named VM1. VM1 has a checkpoint. You need to modify the Checkpoint File Location of VM1. What should you do first? A. Copy the checkpoint file.B. Delete the checkpoint.C. Shut down VM1.D. Pause VM1. Answer: B QUESTION 242Your network contains an Active Directory domain named contoso.com. All user accounts in the marketing department reside in an organizational unit (OU) named OU1. You have a Group Policy object (GPO) named GPO1. GPO1 contains Folder Redirection settings. GPO1 has default permissions. You discover that the Folder Redirection settings are not applied to the users in the marketing department. You open Group Policy Management as shown in the exhibit. (Click the Exhibit button.)



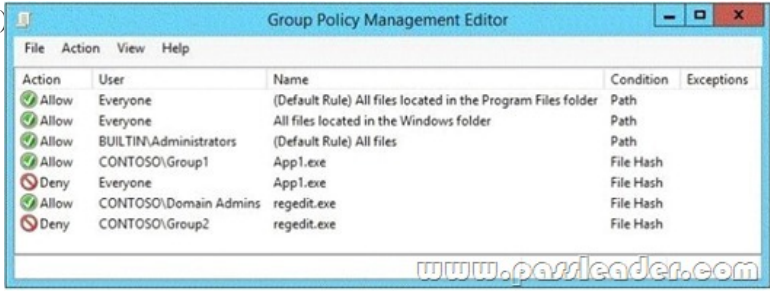
You need to ensure that the Folder Redirection settings in GPO1 apply to the marketing users. What should you do? A. Modify the Delegation settings of GPO1.B. Enable the link of GPO1.C. Enforce GPO1.D. Modify the link order of GPO1. Answer: B QUESTION 243Your network contains multiple subnets. On one of the subnets, you deploy a server named Server1 that runs Windows Server 2012 R2. You install the DNS Server server role on Server1, and then you create a standard primary zone named contoso.com. You need to ensure that client computers can resolve IP addresses to host names. What should you do first? A. Create a GlobalNames zone.B. Convert the contoso.com zone to an Active Directory-integrated zone.C. Configure dynamic updates for contoso.com.D. Create a reverse lookup zone. Answer: D QUESTION 244You have a print server named Print1 that runs Windows Server 2012 R2. Print1 has 10 shared printers. You need to change the location of the spool folder. What should you modify? A. The properties of the Print Spooler serviceB. The Print Server PropertiesC. The user environment variablesD. The PrintQueue.inf file Answer: B QUESTION 245You have a server named Server1 that runs Windows Server 2012 R2. You try to install the Microsoft .NET Framework 3.5 Features feature on Server1, but the installation fails repeatedly. You need to ensure that the feature can be installed on Server1. What should you do? A. Run the Add-WindowsPackagecmdlet.B. Disable User Account Control (UAC).C. Specify an alternate source path.D. Install the Web Server (IIS) server role. Answer: C QUESTION 246You have a Hyper-V host named Server1 that runs Windows Server 2012 R2 Datacenter.Server1 is located in an isolated network that cannot access the Internet. On Server1, you install a new virtual machine named VM1.VM1 runs Windows Server 2012 R2 Essentials and connects to a private virtual network. After 30 days, you discover that VM1 shuts down every 60 minutes. You need to resolve the issue that causes VM1 to shut down every 60 minutes. What should you do? A. On VM1, run slmgr.exe and specify the /ipk parameter.B. On Server1, run slmgr.exe and specify the /rearm-sku parameter.C. Create a new internal virtual network and attach VM1 to the new virtual network.D. On Server1, run Add-WindowsFeatureVolumeActivation. Answer: A QUESTION 247You have a Hyper-V host named Server1 that runs Windows Server 2012 R2. Server1 hosts a virtual machine named VM1 that runs Windows Server 2012 R2. VM1 has several snapshots. You need to modify the snapshot file location of VM1.

What should you do? A. Delete the existing snapshots, and then modify the settings of VM1.B. Right-click VM1, and then click Move.C. Right-click VM1, and then click Export.D. Pause VM1, and then modify the settings of VM1. Answer: A QUESTION 248 You have a server named Print1 that runs Windows Server 2012 R2. On Print1, you share a printer named Printer1. You need to ensure that only the members of the Server Operators group, the Administrators group, and the Print Operators group can send print jobs to Printer1. What should you do? A. Remove the permissions for the Creator Owner group.B. Assign the Print permission to the Server Operators group.C. Remove the permissions for the Everyone group.D. Assign the Print permission to the Administrators group. Answer: C QUESTION 249 Your network contains a server named Server1 and 10 Web servers. All servers run Windows Server 2012 R2. You create a Windows PowerShell Desired State Configuration (DSC) to push the settings from Server1 to all of the Web servers. On Server1, you modify the file set for the Web servers. You need to ensure that all of the Web servers have the latest configurations. Which cmdlet should you run on Server1? A. Restore-DcsConfigurationB. Set DcsLocalConfigurationManagerC. Start-DcsConfigurationD. Get-DcsConfiguration Answer: C QUESTION 250 Your network contains an Active Directory domain named contoso.com. The domain contains a domain controller named Server1 that runs Windows Server 2012 R2. On Server1, you create a work folder named Work1. A user named User1 connects to Work1 from a computer named Computer1. You need to identify the last time the documents in Work1 were synchronized successfully from Computer1. What should you do? A. From Windows PowerShell, run the Get-SyncShare cmdlet.B. From Windows PowerShell, run the Get-SyncUserSettings cmdlet.C. From Server Manager, review the properties of Computer1.D. From Server Manager, review the properties of User1. Answer: D QUESTION 251 You have a server named Server1 that runs Windows Server 2012 R2. You add an additional disk to Server1 as shown in the exhibit. (Click the Exhibit button.)



You need to ensure that users can access the additional disk from drive C. What should you do? A. Convert Disk 0 and Disk 1 to dynamic disks and extend a volume.B. Convert Disk 1 to a dynamic disk and create a spanned volume.C. Create a simple volume on Disk 1 and mount the volume to a folder.D. Convert Disk 0 to a dynamic disk and add a mirror. Answer: C QUESTION 252 Your network contains several servers that run Windows Server 2012 R2 and client computers that run Windows 8.1. You download several signed Windows PowerShell scripts from the Internet. You need to run the PowerShell scripts on all of the servers and all of the client computers. What should you modify first? A. the environment variables on all of the serversB. the environment variables on all client computersC. the execution policy on all of the serversD. the execution policy on all of the client computers Answer: A QUESTION 253 You have a server named Server1 that runs Windows Server 2012 R2. Server1 has three physical network adapters named NIC1, NIC2, and NIC3. On Server1, you create a NIC team named Team1 by using NIC1 and NIC2. You configure Team1 to accept network traffic on VLAN 10. You need to ensure that Server1 can accept network traffic on VLAN 10 and VLAN 11. The solution must ensure that the network traffic can be received on both VLANs if a network adapter fails. What should you do? A. From Server Manager, change the load balancing mode of Team1.B. Run the New-NetLbfoTeam cmdlet.C. From Server Manager, add an interface to Team1.D. Run the Add-NetLbfoTeamMember cmdlet. Answer: C QUESTION 254 You have a server named Server1 that runs Windows Server 2012 R2. You need to create a script that will create and mount a virtual hard disk. Which tool should you use? A. vdsldr.exeB. diskpart.exeC. fsutil.exeD. vds.exe Answer: B QUESTION 255 Hotspot Question Your network contains an Active Directory domain named contoso.com. All domain controllers run Windows Server 2012 R2. All server are configured to enforce AppLocker policies. You install a server named Server1. On

Server1, you install an application named appl.exe in a folder located on C:App1. You have two domain groups named Group1 and Group2. A user named User1 is a member of Group1 and Group2. You create a Group Policy object (GPO) named GPO1. You link GPO1 to contoso.com. You create the executable rules as shown in the exhibit by using the Create Executable Rules wizard. (Click the Exhibit button.)



Action	User	Name	Condition	Exceptions
Allow	Everyone	(Default Rule) All files located in the Program Files folder	Path	
Allow	Everyone	All files located in the Windows folder	Path	
Allow	BUILTIN\Administrators	(Default Rule) All files	Path	
Allow	CONTOSO\Group1	App1.exe	File Hash	
Deny	Everyone	App1.exe	File Hash	
Allow	CONTOSO\Domain Admins	regedit.exe	File Hash	
Deny	CONTOSO\Group2	regedit.exe	File Hash	

To answer, complete each statement according to the information presented in the exhibit. Each correct selection is worth one point.

Answer Area

User1 can run regedit.exe if ...

User1 is removed from Group2.  
User1 is added to the Domain Admins group.  
regedit.exe is renamed as registryeditor.exe.

User1 can run app1.exe if ...

app1.exe is renamed as app2.exe.  
the Deny rule for app1.exe is removed.  
an exception is added to the default rules.  
Group1 is added to the Domain Admins group.  
User1 is added to the BUILTIN\Administrators group

Answer:

Answer Area

User1 can run regedit.exe if ...

User1 is removed from Group2.  
User1 is added to the Domain Admins group.  
regedit.exe is renamed as registryeditor.exe.

User1 can run app1.exe if ...

app1.exe is renamed as app2.exe.  
the Deny rule for app1.exe is removed.  
an exception is added to the default rules.  
Group1 is added to the Domain Admins group.  
User1 is added to the BUILTIN\Administrators group

QUESTION 256 You have virtual machine named VM1. VM1 uses a fixed size virtual hard disk (VHD) named disk1.vhd. Disk1.vhd is 200 GB. You shut down VM1. You need to reduce the size of disk1.vhd. Which action should you select from the Edit Virtual Hard Disk Wizard? A. MergeB. CompactC. ShrinkD. Convert Answer: D QUESTION 257 You have a Hyper-V host named Server1 that runs Windows Server 2012 R2. Server1 hosts 50 virtual machines that run Windows Server 2012 R2. Your company uses smart cards for authentication. You need to ensure that you can use smart card authentication when you connect to the virtual machine by using Virtual Machine Connection. What should you configure? A. The NUMA Spanning settingsB. The RemoteFX settingsC. The Enhanced Session Mode PolicyD. The Integration Services settings Answer: C QUESTION 258 Your network contains an Active Directory domain named contoso.com. You have a DHCP server named Server1 that runs Windows Server 2008. You install Windows Server 2012 R2 on a server named Server2. You install the DHCP Server server role on Server2. You need to migrate the DHCP services from Server1 to Server2. The solution must meet the following requirements:- Ensure that existing leases are migrated.- Prevent lease conflicts.Which three actions should you perform? (Each correct answer presents part of the solution. Choose three.) A. On Server1, run the Export-DhcpServer cmdlet.B. On Server1, run the Stop-Service cmdlet.C. On Server2, run the Receive-SmigServerData cmdlet.D. On Server2, run the Stop-Service cmdlet.E. On Server2, run the Import-DhcpServer cmdlet.F. On Server1, run the Send-SmigServerData cmdlet. Answer: ABE QUESTION 259 Your network

contains an Active Directory domain named contoso.com. The domain contains a DHCP server named Server1 that runs Windows Server 2012 R2. You create a DHCP scope named Scope1. The scope has a start address of 192.168.1.10, an end address of 192.168.1.50, and a subnet mask of 255.255.255.192. You need to ensure that Scope1 has a subnet mask of 255.255.255.0. What should you do first? A. From the DHCP console, reconcile Scope1.B. From the DHCP console, delete Scope1.C. From the DHCP console, modify the Scope Options of Scope1.D. From Windows PowerShell, run the Set-DhcpServerv4Scope cmdlet. Answer: B QUESTION 260Drag and Drop QuestionYour network contains two Active Directory forests named contoso.com and adatum.com. Each forest contains an Active Directory Rights Management Services (AD RMS) root cluster. All servers run Windows Server 2012 R2. You need to ensure that the rights account certificates issued in adatum.com are accepted by the AD RMS root cluster in contoso.com. What should you do in each forest? To answer, drag the appropriate actions to the correct forests. Each action may be used once, more than once, or not at all. You may need to drag the split bar between panes or scroll to view content.

Actions	Answer Area
Add a trusted user domain.	Adatum.com: <input type="text" value="Action"/>
Add a rights policy template.	Contoso.com: <input type="text" value="Action"/>
Export the client licenser certificate.	
Export the server licenser certificate.	

www.passleader.com

Answer:

Actions	Answer Area
Add a trusted user domain.	Adatum.com: <input type="text" value="Export the server licenser certificate."/>
Add a rights policy template.	Contoso.com: <input type="text" value="Add a trusted user domain."/>
Export the client licenser certificate.	
Export the server licenser certificate.	

www.passleader.com

QUESTION 261Your network contains a server named Server1 that runs Windows Server 2012 R2. Server1 has the Active Directory Certificate Services server role installed and is configured as a standalone certification authority (CA). You install a second server named Server2. You install the Online Responder role service on Server2. You need to ensure that Server1 can issue an Online Certificate Status Protocol (OCSP) Response Signing certificate to Server2. What should you run on Server1? A. The certreq.exe command and specify the -policy parameterB. The certutil.exe command and specify the -getkey parameterC. The certutil.exe command and specify the -setreg parameterD. The certreq.exe command and specify the -retrieve parameter Answer: C QUESTION 262Hotspot QuestionYou have a server named Server1 that runs Windows Server 2012 R2. You are configuring a storage space on Server1. You need to ensure that the storage space supports tiered storage. Which settings should you configure? To answer, select the appropriate options in the answer area.

www.passleader.com

Answer Area	
Disk allocation:	<div>Automatic Hot Spare Manual</div>
Volume provisioning type:	<div>Fixed Thin</div>

Answer:



www.passleader.com

Answer Area

Disk allocation:

Automatic

Hot Spare

Manual

Volume provisioning type:

Fixed

Thin

QUESTION 263Hotspot QuestionYou have a server that runs Windows Server 2012 R2 and has the iSCSI Target Server role service installed. You run the New-IscsiVirtualDisk cmdlet as shown in the New-IscsiVirtualDisk exhibit. (Click the Exhibit button.)

```
PS C:\> New-IscsiVirtualDisk -Path C:\ISCSIVirtualDisks\Disk2.vhdx -SizeBytes 10GB -ComputerName server2.contoso.com

ClusterGroupName : Server2.Contoso.com
ComputerName      : Server2.Contoso.com
Description       :
DiskType          : Dynamic
HostVolumeId      : {90C0B44E-0393-11E3-AF15-806E6F6E6963}
LocalMountDeviceId :
OriginalPath      :
ParentPath        :
Path              : C:\ISCSIVirtualDisks\Disk2.vhdx
SerialNumber      : 29232708-1808-4112-9363-FC20C692E15F
Size              : 10737418240
SnapshotIds       :
Status            : NotConnected
VirtualDiskIndex   : 1206444880
```

To answer, complete each statement according to the information presented in the exhibits. Each correct selection is worth one point.

www.passleader.com

Answer Area

Disk2.vhdx is ... disk space on drive C.

not using any

using 4 MB of

using 10 GB of

Before an iSCSI initiator can connect to Disk2.vhdx, you must ...

assign Disk2.vhdx to a target.

modify the NTFS permissions of Disk2.vh

mount Disk2.vhdx by running dism.exe.

www.passleader.com

Answer: Answer Area

Disk2.vhdx is ... disk space on drive C.

not using any

using 4 MB of

using 10 GB of

Before an iSCSI initiator can connect to Disk2.vhdx, you must ...

assign Disk2.vhdx to a target.

modify the NTFS permissions of Disk2.vh

mount Disk2.vhdx by running dism.exe.

QUESTION 264Hotspot QuestionYour network contains a DNS server named Server1 that runs Windows Server 2012 R2. Server1 has a zone namedcontoso.com. The network contains a server named Server2 that runs Windows Server 2008 R2. Server1 and Server2 are members of an Active Directory domain named contoso.com. You change the IP address of Server2. Several hours later, some users report that they cannot connect to Server2. On the affected users' client computers, you flush the DNS client

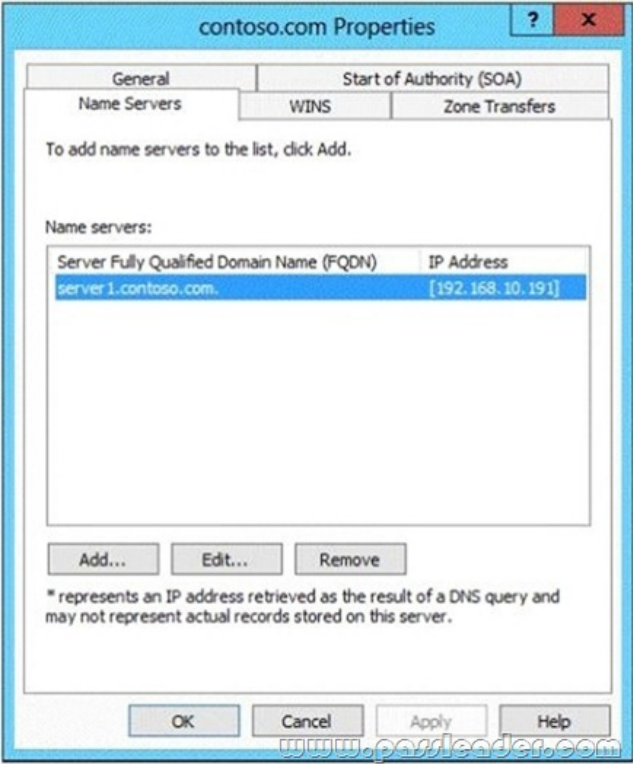
resolver cache, and the users successfully connect to Server2. You need to reduce the amount of time that the client computers cache DNS records from contoso.com. Which value should you modify in the Start of Authority (SOA) record? To answer, select the appropriate setting in the answer area.

Answer:

QUESTION 265Your network contains two Active Directory forests named contoso.com and corp.contoso.com.

Name	Domain
DC1.contoso.com	Domain
DCR21.contoso.com	Domain

User1 is a member of the DnsAdmins domain local group in contoso.com. User1 attempts to create a conditional forwarder to corp.contoso.com but receive an error message shown in the exhibit. (Click the Exhibit button.)



You need to configure bi-directional name resolution between the two forests. What should you do first? A. Add User1 to the DnsUpdateProxy group.B. Configure the zone to be Active Directory-integrated.C. Enable the Advanced view from DNS Manager.D. Run the New Delegation Wizard. Answer: D QUESTION 266Your network contains two Active Directory forests named contoso.com and adatum.com. Each forest contains one domain. Contoso.com has a two-way forest trust to adatum.com. Selective authentication is enabled on the forest trust. Contoso contains 10 servers that have the File Server role service installed. Users successfully access shared folders on the file servers by using permissions granted to the Authenticated Users group. You migrate the file servers to adatum.com. Contoso users report that after the migration, they are unable to access shared folders on the file servers. You need to ensure that the Contoso users can access the shared folders on the file servers. What should you do? A. Disable selective authentication on the existing forest trust.B. Disable SID filtering on the existing forest trust.C. Run netdom and specify the /quarantine attribute.D. Replace the existing forest trust with an external trust. Answer: A QUESTION 267Your network contains two servers named Server1 and Server2 that run Windows Server 2012 R2. Server1 and Server2 are configured as shown in the following table.

Server name	Installed component
Server1	iSCSI Target Server
Server2	iSNS server service

You need to ensure that when new targets are added to Server1, the targets are registered on Server2 automatically. What should you do on Server1? A. Configure the Discovery settings of the iSCSI initiator.B. Configure the security settings of the iSCSI target.C. Run the Set-WmiInstance cmdlet.D. Run the Set-IscsiServerTarget cmdlet. Answer: C QUESTION 268Drag and Drop QuestionYour network contains an Active Directory domain named contoso.com. The domain contains a server named Server1 that runs Windows Server 2012 R2. You plan to install the Active Directory Federation Services server role on Server1 to allow for Workplace Join. You run nslookup enterprise registration and you receive the following results:

```
Server:    dc1.contoso.com
Address:   192.168.0.100

Name:      adfs1.contoso.com
Address:   192.168.0.70
Aliases:   enterpriseregistration.contoso.com
```

You need to create a certificate request for Server1 to support the Active Directory Federation Services (AD FS) installation. How should you configure the certificate request? To answer, drag the appropriate names to the correct locations. Each name may be used

once, more than once, or not at all. You may need to drag the split bar between panes or scroll to view content.

Names	Answer
Adfs1.contoso.com	
Contoso.com	Subject
Dc1.contoso.com	Subject
Enterpriseregistration.contoso.com	
Server1.contoso.com	

Answer:

Names	Answer Area
Adfs1.contoso.com	Subject name (CN): Adfs1.contoso.com
Contoso.com	Subject Alternative Name (DNS): Adfs1.contoso.com
Dc1.contoso.com	Subject Alternative Name (DNS): Enterpriseregistration.contoso.com
Enterpriseregistration.contoso.com	
Server1.contoso.com	

www.passleader.com

QUESTION 269Drag and Drop QuestionYou have a server that runs Windows Server 2012 R2. You create a new work folder named Share1. You need to configure Share1 to meet the following requirements:- Ensure that all synchronized copies of Share1 are encrypted. - Ensure that clients synchronize to Share1 every 30 minutes. - Ensure that Share1 inherits the NTFS permissions of the parent folder.Which cmdlet should you use to achieve each requirement? To answer, drag the appropriate cmdlets to the correct requirements. Each cmdlet may be used once, more than once, or not at all. You may need to drag the split bar between panes or scroll to view content.

Cmdlets	Answer Area
Enable-SyncShare	Ensure that all synchronized copies of Share1 are encrypted. Cmdlet
New-SyncDevicePolicy	Ensure that clients synchronize to Share1 every 30 minutes. Cmdlet
New-SyncShare	Ensure that Share1 inherits the NTFS permissions of the parent folder. Cmdlet
Set-SyncDevicePolicy	
Set-SyncServerSettings	
Set-SyncShare	

www.passleader.com

Answer:

Cmdlets	Answer Area
Enable-SyncShare	Ensure that all synchronized copies of Share1 are encrypted. Set-SyncShare
New-SyncDevicePolicy	Ensure that clients synchronize to Share1 every 30 minutes. Set-SyncServerSettings
New-SyncShare	Ensure that Share1 inherits the NTFS permissions of the parent folder. Set-SyncShare
Set-SyncDevicePolicy	
Set-SyncServerSettings	
Set-SyncShare	

www.passleader.com

QUESTION 270You have a virtual machine named VM1 that runs on a host named Host1. You configure VM1 to replicate to another host named Host2. Host2 is located in the same physical location as Host1. You need to add an additional replica of VM1. The replica will be located in a different physical site. What should you do? A. From VM1 on Host2, click Extend Replication.B. On Host1, configure the Hyper-V settings.C. From VM1 on Host1, click Extend Replication.D. On Host2, configure the Hyper-V settings. Answer: A Download Free 70-417 PDF Dumps From Google Drive: [https://drive.google.com/open?id=0B-ob6L\\_QjGLpfjYyZU1pU1VQdlpWV0dXUlljZVVhWmJUa0pZbVVBdzZYSiIN3ktT1VMUIk](https://drive.google.com/open?id=0B-ob6L_QjGLpfjYyZU1pU1VQdlpWV0dXUlljZVVhWmJUa0pZbVVBdzZYSiIN3ktT1VMUIk) (Explanation For Every Question Is Available!) PassLeader 70-417 VCE Dumps Screenshots:



**PassLeader Premium 70-417 VCE Dumps Preview**

Question 10 of 454 (Exam A, Q236)

Mark

Your network contains an Active Directory domain named contoso.com. The domain contains six domain controllers. The domain controllers are configured as shown in the following table.

Domain controller name	Operating system	FSMO role
DC1	Windows Server 2008 R2	PDC emulator
DC2	Windows Server 2012 R2	Schema master
DC3	Windows Server 2008 R2	Infrastructure master
DC4	Windows Server 2008 R2	Domain naming master
DC5	Windows Server 2008 R2	RID master
DC6	Windows Server 2012 R2	None

The network contains a server named Server1 that has the Hyper-V server role installed. DC1 is a virtual machine that is hosted on Server1.

You need to ensure that you can clone DC6.

Which FSMO role should you transfer to DC2?

☐ A. Rid master  
☐ B. Domain naming master  
☐ C. PDC emulator  
☐ D. Infrastructure master

Previous Next Review Show Answer Show List Save Session End Exam

**PassLeader Premium 70-417 VCE Dumps Preview**

Question 11 of 454 (Exam A, Q129)

Mark Instructions


**HOTSPOT**

Your network contains an Active Directory domain named contoso.com.

You need to identify whether the Company attribute replicates to the global catalog.

Which part of the Active Directory partition should you view?

To answer, select the appropriate Active Directory object in the answer area.



Previous Next Review Show Answer Show List Save Session End Exam

Download New 70-417 VCE Dumps From PassLeader: <http://www.passleader.com/70-417.html> (New Questions Are 100% Available and Wrong Answers Have Been Corrected!!!)