

[2016-NEW! New PassLeader 485q 70-410 Exam Questions For Free Download (Question 121 – Question 150)

Need New 70-410 Exam Dumps? Download the valid PassLeader 485q 70-410 exam dumps! PassLeader offer the newest 70-410 pdf and vce dumps, which including all the new 70-410 exam questions and answers. We PassLeader ensure that our 485q 70-410 practice test is the most valid and you can get all real exam questions with our 70-410 study guide and pdf ebook materials. We share the 70-410 sample questions with vce and pdf for free download now! keywords: 70-410 exam,485q 70-410 exam dumps,485q 70-410 exam questions,70-410 pdf dumps,70-410 practice test,70-410 vce dumps,70-410 study guide,70-410 braindumps,Installing and Configuring Windows Server 2012 R2 Exam P.S. Download Free 70-410 PDF Dumps and Preview PassLeader 70-410 VCE Dumps At The End Of This Post!!! (Ctrl+End) QUESTION 121You have a server named Server1 that runs Windows Server 2012 R2. Server1 has following storage spaces:- Data - Users - Backups - PrimordialYou add an additional hard disk to Server1. You need to identify which storage space contains the new hard disk. Which storage space contains the new disk? A. DataB. PrimordialC. UsersD. Backups Answer: B QUESTION 122You have a server named Server1. Server1 runs Windows Server 2012 R2 and has the File and Storage Services server role installed. You attach four 500-GB disks to Server1. You need to configure the storage to meet the following requirements:- Storage for an application named Application1 must be provided. Application1 requires 20 GB and will require a maximum of 800 GB in three years. - Storage for an application named Application2 must be provided. Application2 requires 20 GB and will require a maximum of 900 GB in three years. - The solution must provide the ability to dynamically add storage without requiring configuration changes to the applications.- The storage must be available if a single disk fails. Which two actions should you perform? (Each correct answer presents part of the solution. Choose two.) A. From File and Storage Services, create virtual disks by using fixed provisioning.B. From File and Storage Services, create a storage pool that uses all four disks.C. From Disk Management, create two new mirror volumes that use two disks each.D. From Disk Management, create a new RAID-5 volume that uses all four disks.E. From File and Storage Services, create virtual disks by using thin provisioning. Answer: BE QUESTION 123Your network contains multiple subnets. On one of the subnets, you deploy a server named Server1 that runs Windows Server 2012 R2. You install the DNS Server server role on Server1, and then you create a standard primary zone named contoso.com. You need to ensure that client computers can resolve single-label names to IP addresses. What should you do first? A. Create a reverse lookup zone.B. Convert the contoso.com zone to an Active Directory-integrated zone.C. Configure dynamic updates for contoso.com.D. Create a GlobalNames zone. Answer: A QUESTION 124You have a server named Server1 that runs Windows Server 2012 R2. Server1 has six network adapters. Two of the network adapters are connected to a network named LAN1, two of the network adapters are connected to a network named LAN2, and two of the network adapters are connected to a network named LAN3. You create a network adapter team named Team1 from the two adapters connected to LAN1. You create a network adapter team named Team2 from the two adapters connected to LAN2. A company policy states that all server IP addresses must be assigned by using a reserved address in DHCP. You need to identify how many DHCP reservations you must create for Server1. How many reservations should you identify? A. 3B. 4C. 6D. 8 Answer: B QUESTION 125Your network contains an Active Directory domain named contoso.com. All servers run Windows Server 2012 R2. The domain contains a server named Server1. You open Review Options in the Active Directory Domain Services Configuration Wizard, and then you click View script. You need to ensure that you can use the script to promote Server1 to a domain controller. Which file extension should you use to save the script? A. .ps1B. .batC. .xmlD. .cmd Answer: A QUESTION 126Your network contains an Active Directory domain named contoso.com. The domain contains a server named Server1. Server1 runs a Server Core installation of Windows Server 2012 R2. You install the DNS Server server role on Server1. You need to perform the following configurations on Server1:- Create an Active Directory-integrated zone named adatum.com. - Send unresolved DNS client queries for other domain suffixes to the DNS server of your company's Internet Service Provider (ISP).Which Windows PowerShell cmdlets should you use? To answer, drag the appropriate cmdlet to the correct configuration in the answer area. Each cmdlet may be used once, more than once, or not at all. You may need to drag the split bar between panes or scroll to view content.

Cmdlets
Add-DNSServerDirectoryPartition
Add-DNSServerPrimaryZone
Set-DNSServer
Set-DNSServerForwarder
Set-DNSServerOSSetting
Set-DNSServerSetting

Answer:

Cmdlets

Add-DNSServerDirectoryPartition

Add-DNSServerPrimaryZone

Set-DNSServer

Set-DNSServerForwarder

Set-DNSServerDSSetting

Set-DNSServerSetting

Answer Area

Create an Active Directory-integrated zone named adatum.com.

Add-DNSServerPrimaryZone

Send unresolved DNS client queries for other domain suffixes to the DNS server of your company's Internet Service Provider (ISP).

Set-DNSServerForwarder

www.passleader.com

QUESTION 127Your network contains an Active Directory domain named contoso.com. The network contains 500 client computers that run Windows 8. All of the client computers connect to the Internet by using a web proxy. You deploy a server named Server1 that runs Windows Server 2012 R2. Server1 has the DNS Server server role installed. You configure all of the client computers to use Server1 as their primary DNS server. You need to prevent Server1 from attempting to resolve Internet host names for the client computers. What should you do on Server1? A. Create a primary zone named ".".B. Configure the Security settings of the contoso.com zone.C. Create a zone delegation for GlobalNames.contoso.com.D. Create a stub zone named "root".

Answer: A QUESTION 128Your network contains an Active Directory domain named contoso.com. The domain contains 100 user accounts that reside in an organizational unit (OU) named OU1. You need to ensure that a user named User1 can link and unlink Group Policy objects (GPOs) to OU1. The solution must minimize the number of permissions assigned to User1. What should you do? A. Modify the permissions on OU1.B. Run the Set-GPPermission cmdlet.C. Add User1 to the Group Policy Creator Owners group.D. Modify the permissions on the User1 account. Answer: A QUESTION 129You have a server that runs Windows Server 2012 R2. The server contains the disks configured as shown in the following table.

Disk name	Partition table type	Disk storage type	Unallocated disk space
Disk 0	GPT	Dynamic	2 TB
Disk 1	MBR	Basic	4 TB
Disk 2	GPT	Dynamic	4 TB
Disk 3	GPT	Dynamic	4 TB
Disk 4	MBR	Basic	2 TB

You need to create a volume that can store up to 3 TB of user files. The solution must ensure that the user files are available if one of the disks in the volume fails. What should you create? A. a mirrored volume on Disk 1 and Disk 4B. a mirrored volume on Disk 2 and Disk 3C. a RAID-5 volume on Disk 1, Disk 2, and Disk 3D. a spanned volume on Disk 0 and Disk 4 Answer: B QUESTION 130What should you do for server core so it can be managed from another server 2012 R2?



A. 1B. 2C. 3D. 4E. 5F. 6G. 7H. 8I. 9J. 10K. 11L. 12M. 13N. 14O. 15 Answer: H QUESTION 131Your network contains an Active Directory domain named contoso.com. The domain contains a server named Server1. Server1 runs Windows Server 2012 R2. On Server1, you create a printer named Printer1. You share Printer1 and publish Printer1 in Active Directory. You need to provide a group named Group1 with the ability to manage Printer1. What should you do? A. From Print Management, configure the Sharing settings of Printer1.B. From Active Directory Users and Computers, configure the Security settings of Server1-Printer1.C. From Print Management, configure the Security settings of Printer1.D. From Print Management, configure the Advanced settings of Printer1. Answer: C QUESTION 132Your network contains an Active Directory domain named contoso.com. All servers run Windows Server 2012 R2. Client computers run either Windows 7 or Windows 8. All of the computer accounts of the client computers reside in an organizational unit (OU) named Clients. A Group Policy object (GPO) named GP01 is linked to the Clients OU. All of the client computers use a DNS server named Server1. You configure a server named Server2 as an ISATAP router. You add a host (A) record for ISATAP to the contoso.com DNS zone. You need to ensure that the client computers locate the ISATAP router. What should you do? A. Run the Add-DnsServerResourceRecord cmdlet on Server1.B. Configure the DNS Client Group Policy setting of GPO1.C. Configure the Network Options Group Policy preference of GPO1.D. Run the

Set-DnsServerGlobalQueryBlockList cmdlet on Server1. Answer: D QUESTION 133Your network contains an Active Directory domain named contoso.com. The domain contains a server named Server1 that runs Windows Server 2012 R2 and has the Remote Access server role installed. A user named User1 must connect to the network remotely. The client computer of User1 requires Challenge Handshake Authentication Protocol (CHAP) for remote connections. CHAP is enabled on Server1. You need to ensure that User1 can connect to Server1 and authenticate to the domain. What should you do from Active Directory Users and Computers?

- A. From the properties of Server1, select Trust this computer for delegation to any service (Kerberos only).
B. From the properties of Server1, assign the Allowed to Authenticate permission to User1.
C. From the properties of User1, select Use Kerberos DES encryption types for this account.
D. From the properties of User1, select Store password using reversible encryption.

Answer: D QUESTION 134Your network contains an Active Directory domain named contoso.com. The domain contains a server named Server1 that runs Windows Server 2012 R2. Server1 has the Hyper-V server role installed. Server1 has a virtual switch named RDS Virtual. You replace all of the network adapters on Server1 with new network adapters that support single-root I/O virtualization (SR-IOV). You need to enable SR-IOV for all of the virtual machines on Server1. Which two actions should you perform? (Each correct answer presents part of the solution. Choose two.)

- A. On each virtual machine, modify the Advanced Features settings of the network adapter.
B. Modify the settings of the RDS Virtual virtual switch.
C. On each virtual machine, modify the BIOS settings.
D. Delete, and then recreate the RDS Virtual virtual switch.
E. On each virtual machine, modify the Hardware Acceleration settings of the network adapter.

Answer: DE QUESTION 135Your network contains a server named Server1 that runs Windows Server 2012 R2. Server1 is a member of a workgroup. You need to configure a local Group Policy on Server1 that will apply only to non-administrators. Which tool should you use?

- A. Server Manager
B. Group Policy Management Editor
C. Group Policy Management
D. Group Policy Object Editor

Answer: D QUESTION 136Your network contains an Active Directory domain named contoso.com. The domain contains a server named Server1 that runs Windows Server 2012 R2. Server1 contains a virtual machine named VM1 that runs Windows Server 2012 R2. You need to ensure that a user named User1 can install Windows features on VM1. The solution must minimize the number of permissions assigned to User1. To which group should you add User1?

- A. Administrators on VM1
B. Power Users on VM1
C. Hyper-V Administrators on Server1
D. Server Operators on Server1

Answer: A QUESTION 137Your network contains an Active Directory domain named adatum.com. The domain contains a member server named LON-DC1. LON-DC1 runs Windows Server 2012 R2 and has the DHCP Server server role installed. The network contains 100 client computers and 50 IP phones. The computers and the phones are from the same vendor. You create an IPv4 scope that contains addresses from 172.16.0.1 to 172.16.1.254. You need to ensure that the IP phones receive IP addresses in the range of 172.16.1.100 to 172.16.1.200. The solution must minimize administrative effort. What should you create?

- A. Server level policies
B. Filters
C. Reservations
D. Scope level policies

Answer: D QUESTION 138Your network contains an Active Directory forest. The forest contains a single domain named contoso.com. The domain contains four domain controllers. The domain controllers are configured as shown in the following table.

Name	Operating system	Configurat
DC1	Windows Server 2008 R2	Domain name Schema master Global catalog
DC2	Windows Server 2012	PDC emulator Global catalog
DC3	Windows Server 2008 R2	Infrastructure
DC4	Windows Server 2012	RID master Global catalog

You plan to deploy a new domain controller named DC5 in the contoso.com domain. You need to identify which domain controller must be online to ensure that DC5 can be promoted successfully to a domain controller. Which domain controller should you identify?

- A. DC1
B. DC2
C. DC3
D. DC4

Answer: D QUESTION 139You have a server named Server1. Server1 runs Windows Server 2012 R2. Server1 has a thin provisioned disk named Disk1. You need to expand Disk1. Which two actions should you perform? (Each correct answer presents part of the solution. Choose two.)

- A. From File and Storage Services, extend Disk1.
B. From File and Storage Services, add a physical disk to the storage pool.
C. From Disk Management, extend the volume.
D. From Disk Management, delete the volume, create a new volume, and then format the volume.
E. From File and Storage Services, detach Disk1.

Answer: AB QUESTION 140Your network contains an Active Directory domain named contoso.com. The domain contains a member server named HVServer1. HVServer1 runs Windows Server 2012 R2 and has the Hyper-V server role installed. HVServer1 hosts two virtual machines named Server1 and Server2. Both virtual machines connect to a virtual switch named Switch1. On Server2, you install a network monitoring application named App1. You need to capture all of the inbound and

outbound traffic to Server1 by using App1. Which two commands should you run from Windows PowerShell? (Each correct answer presents part of the solution. Choose two.) A. Get-VM "Server2" | Set-VMNetworkAdapter -IovWeight 1B. Get-VM "Server1" | Set-VMNetworkAdapter -Allow/Teaming OnC. Get-VM "Server1" | Set-VMNetworkAdapter -PortMirroring SourceD. Get-VM "Server2" | Set-VMNetworkAdapter -PortMirroring DestinationE. Get-VM "Server1" | Set-VMNetworkAdapter -IovWeight 0F. Get-VM "Server2" | Set-VMNetworkAdapter-AllowTeaming On Answer: CD QUESTION 141Drag and Drop QuestionYou plan to deploy a DHCP server that will support four subnets. The subnets will be configured as shown in the following table

Subnet name
Subnet1
Subnet2
Subnet3
Subnet4

You need to identify which network ID you should use for each subnet. What should you identify? To answer, drag the appropriate network ID to the each subnet in the answer area.

Network IDs

172.23.1.0/26

172.23.8.0/22

172.23.16.0/25

172.23.128.0/23

Answer Area

Subnet1

Network ID

Subnet2

Network ID

Subnet3

Network ID

Subnet4

Network ID

www.passleader.com

Answer:

Network IDs

172.23.1.0/26

172.23.8.0/22

172.23.16.0/25

172.23.128.0/23

Answer Area

Subnet1

172.23.16.0/25

Subnet2

172.23.1.0/26

Subnet3

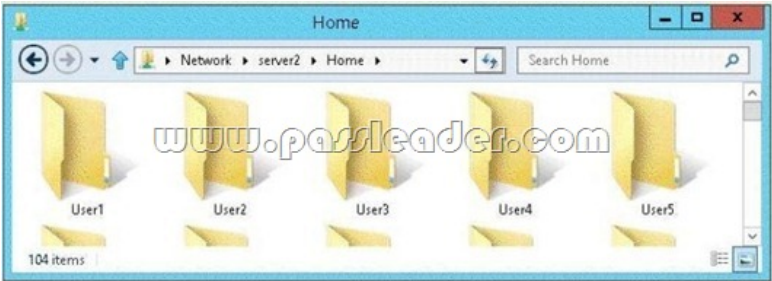
172.23.8.0/22

Subnet4

172.23.128.0/23

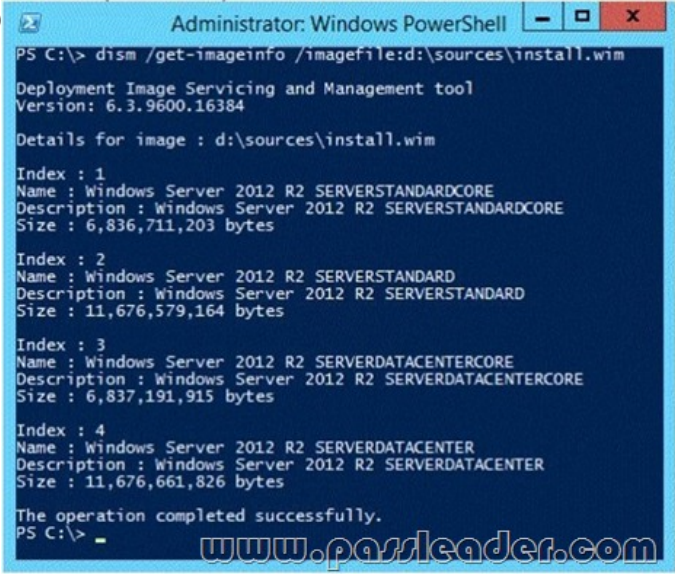
www.passleader.com

QUESTION 142Your network contains an Active Directory domain named adatum.com. The domain contains a file server named Server2 that runs Windows Server 2012 R2. Server2 contains a shared folder named Home. Home contains the home folder of each user. All users have the necessary permissions to access only their home folder. A user named User1 opens the Home share as shown in the exhibit. (Click the Exhibit button.)



You need to ensure that all users see only their own home folder when they access Home. What should you do from Server2? A. From Windows Explorer, modify the properties of Home.B. From Server Manager, modify the properties of the volume that contains Home.C. From Windows Explorer, modify the properties of the volume that contains Home.D. From Server Manager, modify the properties of Home. Answer: D QUESTION 143You have a server named Server1 that runs a Server Core Installation of Windows Server 2012 R2 Datacenter. You have a WIM file that contains the four images of Windows Server 2012 R2 as shown in

the Images exhibit. (Click the Exhibit button.)



You review the installed features on Server1 as shown in the Features exhibit. (Click the Exhibit button.)

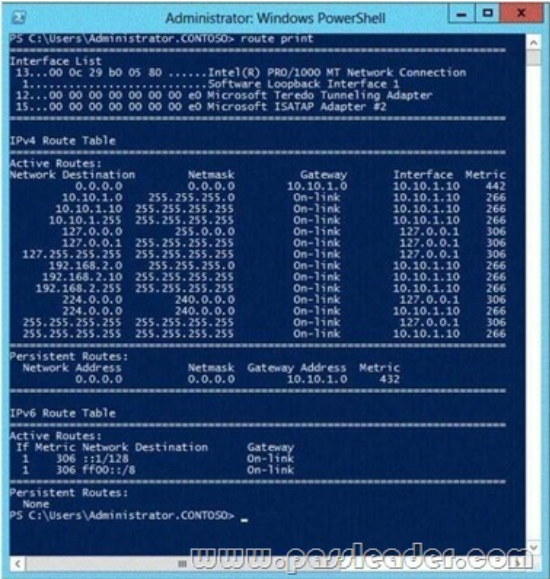


You need to install the Server Graphical Shell feature on Server1. Which two possible sources can you use to achieve this goal? (Each correct answer presents a complete solution. Choose two.) A. Index 1 B. Index 2 C. Index 3 D. Index 4 Answer: BD

QUESTION 144Your network contains two subnets. The subnets are configured as shown in the following table.

Subnet name	Network
LAN1	10.10.1.0/24
LAN2	10.10.1.0/24

You have a server named Server1 that runs Windows Server 2012 R2. Server1 is connected to LAN1. You run the route print command as shown in the exhibit. (Click the Exhibit button.)



You need to ensure that Server1 can communicate with the client computers on LAN2. What should you do? A. Change the default gateway address.B. Set the state of the Teredo interface to disable.C. Change the metric of the 10.10.1.0 route.D. Set the state of the Microsoft ISATAP Adapter #2 interface to disable. Answer: A QUESTION 145Your network contains an Active Directory domain named contoso.com. All servers run Windows Server 2012 R2. The domain contains a member server named

Server1. Server1 has the File Server server role installed. On Server1, you create a share named Documents. The Documents share will contain the files and folders of all users. You need to ensure that when the users connect to Documents, they only see the files to which they have access. What should you do? A. Modify the NTFS permissions.B. Modify the Share permissions.C. Enable access-based enumeration.D. Configure Dynamic Access Control. Answer: C QUESTION 146Your network contains an Active Directory domain named contoso.com. You have a starter Group Policy object (GPO) named GPO1 that contains more than 100 settings. You need to create a new starter GPO based on the settings in GPO1. You must achieve this goal by using the minimum amount of administrative effort. What should you do? A. Run the New-GPStarterGPO cmdlet and the Copy-GPO cmdlet.B. Create a new starter GPO and manually configure the policy settings of the starter GPO.C. Right-click GPO1, and then click Back Up. Create a new starter GPO. Right-click the new GPO, and then click Restore from Backup.D. Right-click GPO1, and then click Copy. Right-click Starter GPOs, and then click Paste. Answer: A QUESTION 147Your network contains an Active Directory domain named contoso.com. The domain contains a member server named Server1. Server1 runs Windows Server 2012 R2 and has the DHCP Server server role installed. You create two IPv4 scopes on Server1. The scopes are configured as shown in the following table.

Scope name	IPv4 scope
Subnet1	192.168.1.0/24
Subnet2	192.168.2.0/24

The DHCP clients in Subnet1 can connect to the client computers in Subnet2 by using an IP address or a FQDN. You discover that the DHCP clients in Subnet2 can connect to client computers in Subnet1 by using an IP address only. You need to ensure that the DHCP clients in both subnets can connect to any other DHCP client by using a FQDN. What should you add? A. The 006 DNS Servers option to Subnet2B. The 015 DNS Domain Name option to Subnet1C. The 006 DNS Servers option to Subnet1D. The 015 DNS Domain Name option to Subnet2 Answer: A QUESTION 148Your network contains an Active Directory domain named contoso.com. The domain contains two servers named Server1 and Server2. Server1 runs Windows Server 2012 R2. Server2 runs Windows Server 2008 R2 Service Pack 1 (SP1) and has the DHCP Server server role installed. You need to manage DHCP on Server2 by using the DHCP console on Server1. What should you do first? A. From Windows PowerShell on Server2, run Enable-PSRemoting cmdlet.B. From Windows PowerShell on Server1, run Install-WindowsFeature.C. From Windows Firewall with Advanced Security on Server2, create an inbound rule.D. From Internet Explorer on Server2, download and install Windows Management Framework 3.0. Answer: B QUESTION 149Your network contains two servers named Server1 and Server2 that run Windows Server 2012 R2. Server1 is a DHCP server that is configured to have a scope named Scope1. Server2 is configured to obtain an IP address automatically. In Scope1, you create a reservation named Res_Server2 for Server2. A technician replaces the network adapter on Server2. You need to ensure that Server2 can obtain the same IP address. What should you modify on Server1? A. The Advanced settings of Res_Server2B. The MAC address of Res Server2C. The Network Access Protection Settings of Scope1D. The Name Protection settings of Scope1 Answer: B QUESTION 150Your network contains an Active Directory domain named contoso.com. An organizational unit (OU) named OU1 contains the user accounts and the computer accounts for laptops and desktop computers. A Group Policy object (GPO) named GP1 is linked to OU1. You need to ensure that the configuration settings in GP1 are applied only to the laptops in OU1. The solution must ensure that GP1 is applied automatically to new laptops that are added to OU1. What should you do? A. Modify the GPO Status of GP1.B. Configure the WMI Filter of GP1.C. Modify the security settings of GP1.D. Modify the security settings of OU1. Answer: B Download Free 70-410 PDF Dumps From Google Drive:

https://drive.google.com/open?id=0B-ob6L_QjGLpfnJzOE1fWnlJOWVtaE93SnJNT3gtaTNYYNVpZkw5THBSMWRKbFlfaXh1azg (Explanation For Every Question Is Available!) PassLeader 70-410 VCE Dumps Screenshots:

PassLeader Premium 70-410 VCE Dumps Preview

Question 18 of 473 (Exam A, Q2)

☐ Mark

Your network contains an Active Directory domain named adatum.com. The domain contains a member server named Host1. Host1 runs Windows Server 2012 R2 and has the Hyper-V server role installed.

Host1 hosts two virtual machines named VM5 and VM6. Both virtual machines connect to a virtual switch named Virtual1.

On VM5, you install a network monitoring application named Monitor1.

You need to capture all of the inbound and outbound traffic to VM6 by using Monitor1.

Which two commands should you run from Windows PowerShell? (Each correct answer presents part of the solution. Choose two.)

- ☐ A. Get-VM "VM5" | Set-VMNetworkAdapter-IsWeight 1
- ☐ B. Get-VM "VM5" | Set-VMNetworkAdapter-IsWeight 0
- ☐ C. Get-VM "VM5" | Set-VMNetworkAdapter-PortMirroring Source
- ☐ D. Get-VM "VM5" | Set-VMNetworkAdapter-AllowTeaming On
- ☐ E. Get-VM "VM5" | Set-VMNetworkAdapter-PortMirroring Destination
- ☐ F. Get-VM "VM5" | Set-VMNetworkAdapter-AllowTeaming On

Previous Next Review Show Answer Show List Save Session End Exam

PassLeader Premium 70-410 VCE Dumps Preview

Question 27 of 473 (Exam A, Q7)

☐ Mark Instructions

HOTSPOT

You have a Hyper-V host named Hyperv1 that runs Windows Server 2012 R2. Hyperv1 hosts a virtual machine named Server1. Server1 uses a disk named Server1.vhdx that is stored locally on Hyperv1.

You stop Server1, and then you move Server1.vhdx to an iSCSI target that is located on another server.

You need to configure Server1 to meet the following requirements:

- Ensure that Server1 can start by using Server1.vhdx.
- Prevent Server1.vhdx from consuming more than 500 IOPS on the iSCSI target.

Settings for SERVER1 on SERVER1

SERVER1

- Hardware
 - Add Hardware
- Firmware
 - Boot from File
- Memory
 - 3224 MB
- Processor
 - 1 virtual processor
- Compatibility
 - NUMA
- SCSI Controller
 - Hard Drive
 - Server1.vhdx

Previous Next Review Show Answer Show List Save Session End Exam

Download New 70-410 VCE Dumps From PassLeader: <http://www.passleader.com/70-410.html> (New Questions Are 100% Available and Wrong Answers Have Been Corrected!!!)